

# Metropolis: *by* **LIGHT**

Enlightened by the sea

*Sandra Rey*





**15%**

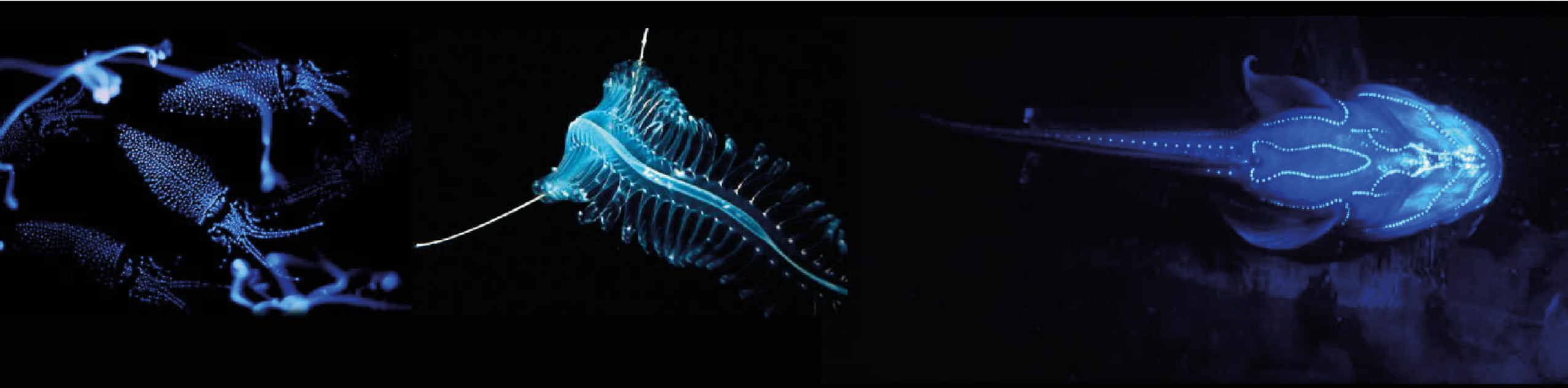
of global electricity consumption



**1,7bn**  
tonnes of greenhouse gas

An aerial night photograph of a city, likely San Francisco, showing a dense layer of fog or smog that obscures the lower parts of the buildings. The city lights are visible, with a prominent yellowish glow from streetlights and buildings, and some green and blue lights scattered throughout. The text is overlaid in the center of the image.

**80+%**  
of Earth's inhabitants affected



**meanwhile...**



A photograph of a forest with tall, thin trees and a mossy floor. Sunlight filters through the trees, creating a warm, golden glow. The text is overlaid in the center.

**3,8bn years**  
of R&D and know-how

A large library with many bookshelves filled with books. The shelves are made of dark wood and are densely packed with books of various colors and sizes. The books are arranged in rows, and the spines of many books are visible. The lighting is warm, highlighting the texture of the wood and the variety of book covers.

# biomimicry

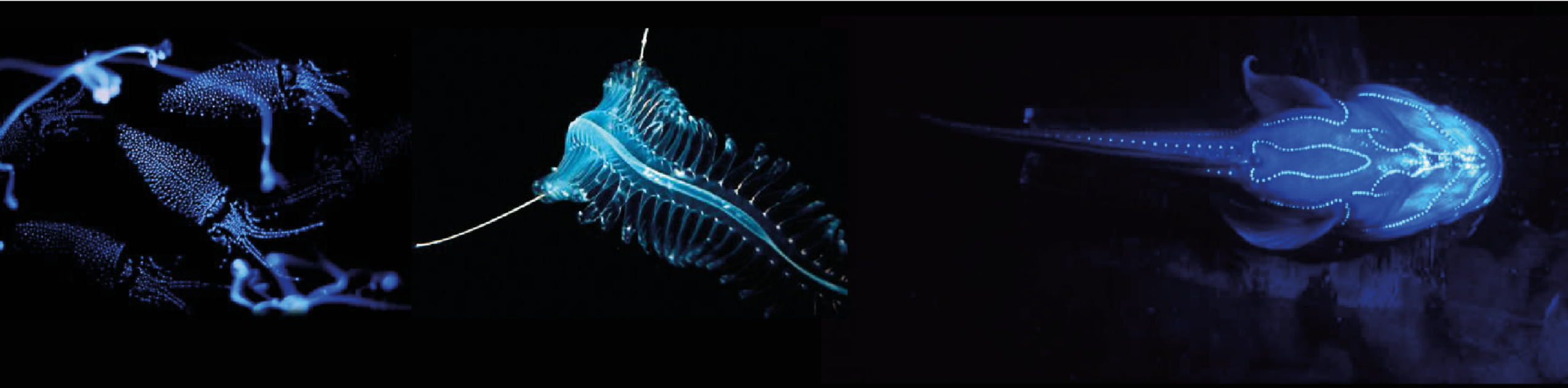
## a huge library



## Few principles

- ✓ works with solar energy
- ✓ use only what needed
- ✓ adapt form to function
- ✓ recycles everything
- ✓ reward cooperation
- ✓ valorise local expertise
- ✓ limit excesses





**bioluminescence...**

# ... found on Earth, ordinary under the ocean





represented in the  
collective psyche





A photograph of a cave interior, likely a speleothem cave, featuring numerous glowing blue lights. The lights are arranged in a pattern that resembles a constellation or a specific cave formation. The cave walls are dark and textured, with some stalactites visible. The overall atmosphere is mysterious and ethereal.

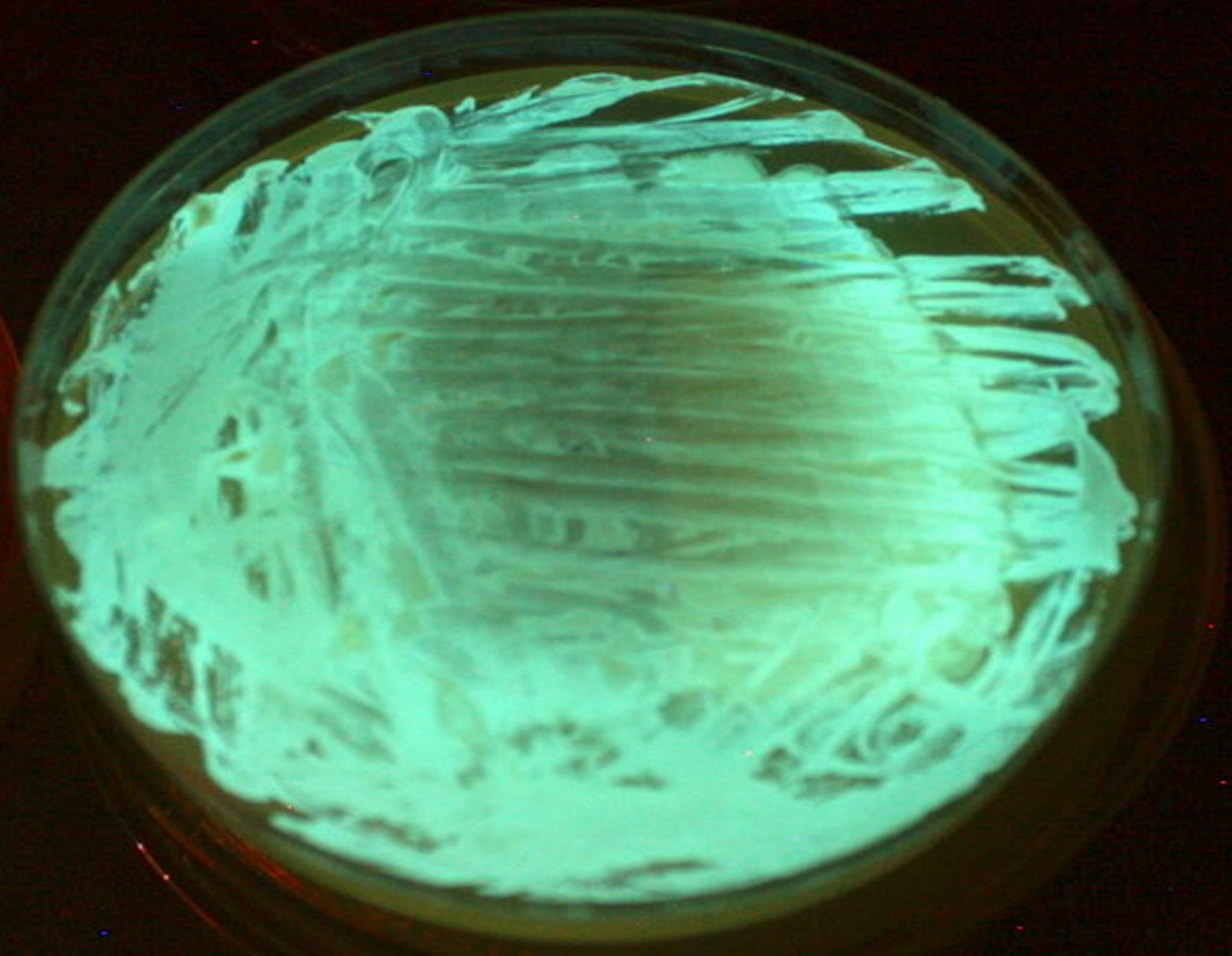
**has been used  
for a very long time**

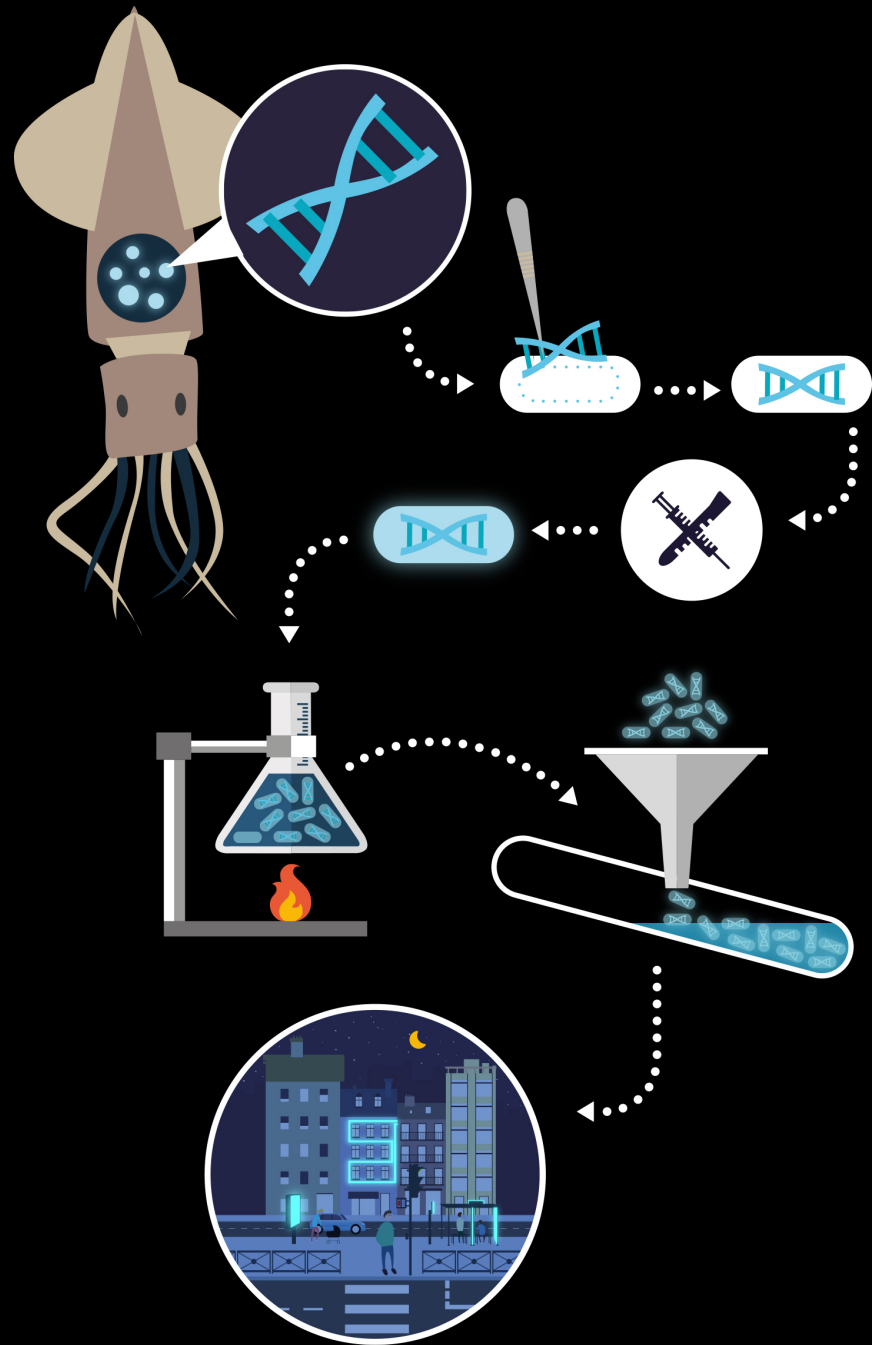


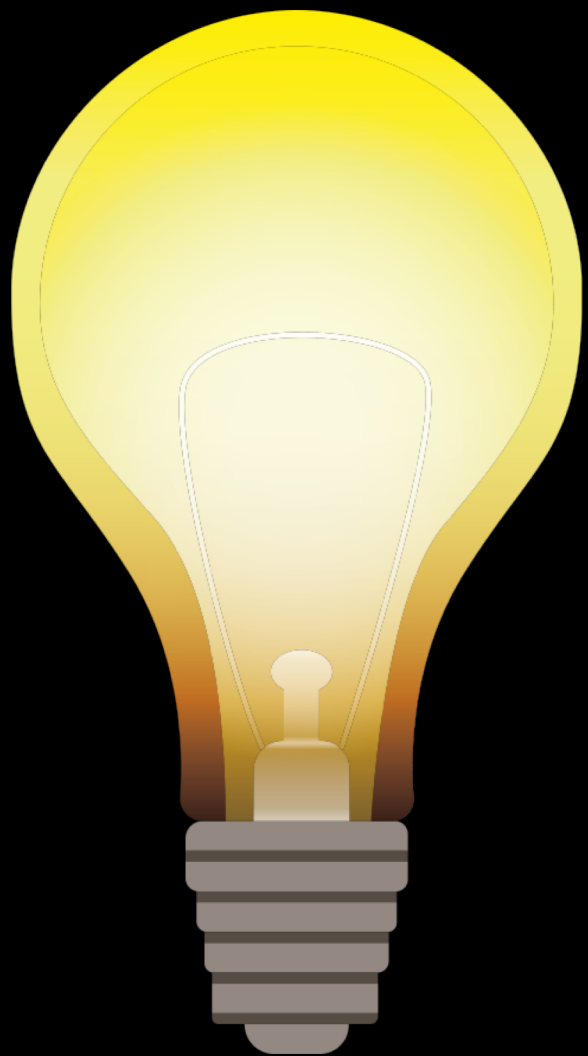














create a **living**  
**raw material**



# to revolutionize the lighting industry



environment



well-being



creativity

# design more liveable and sustainable cities



street  
furniture



undergrounds



buildings



parks and  
gardens



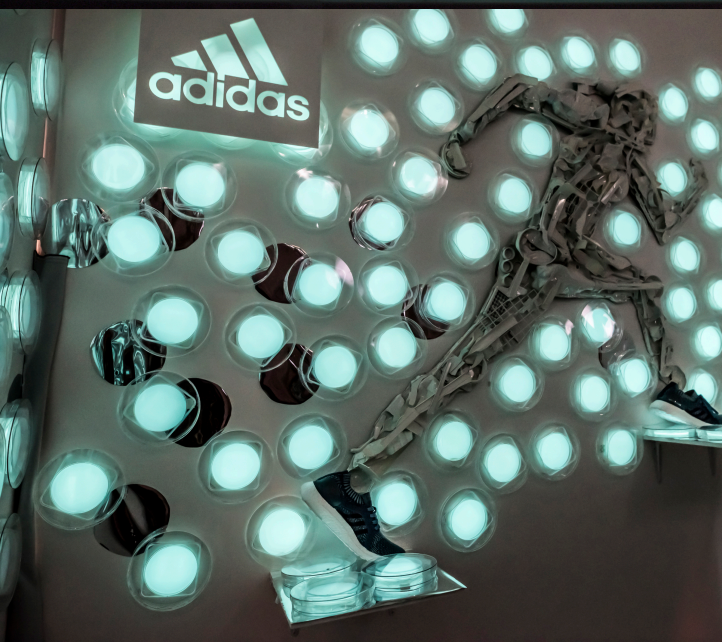
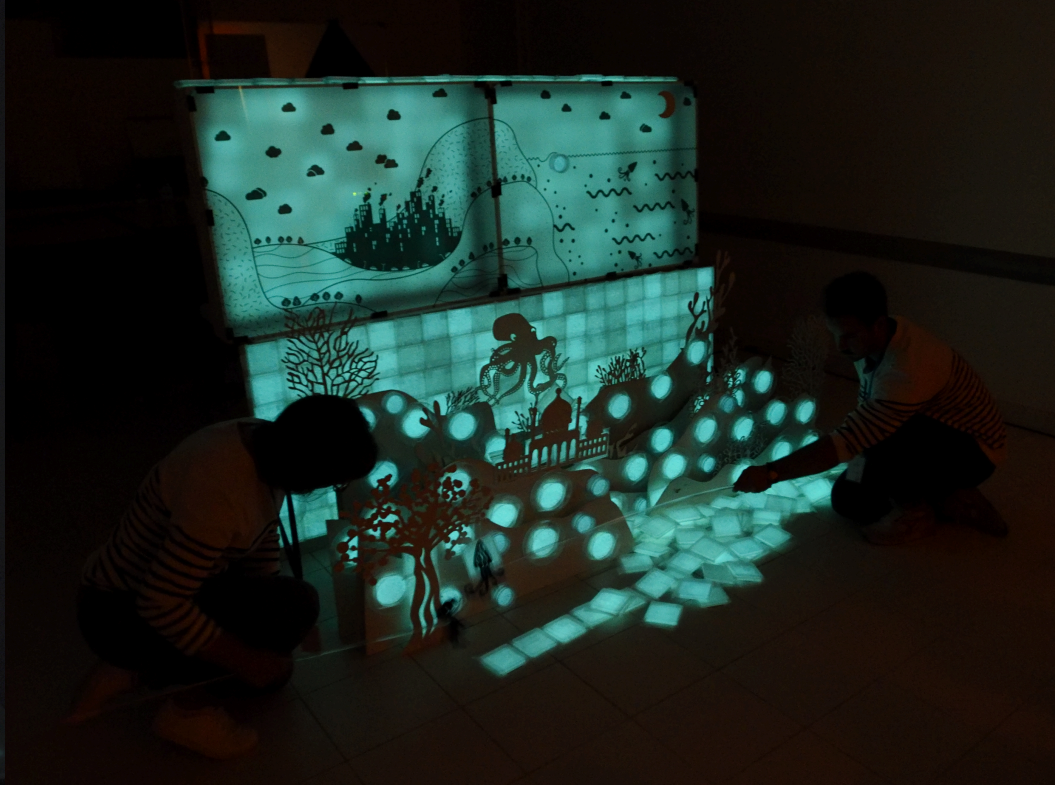


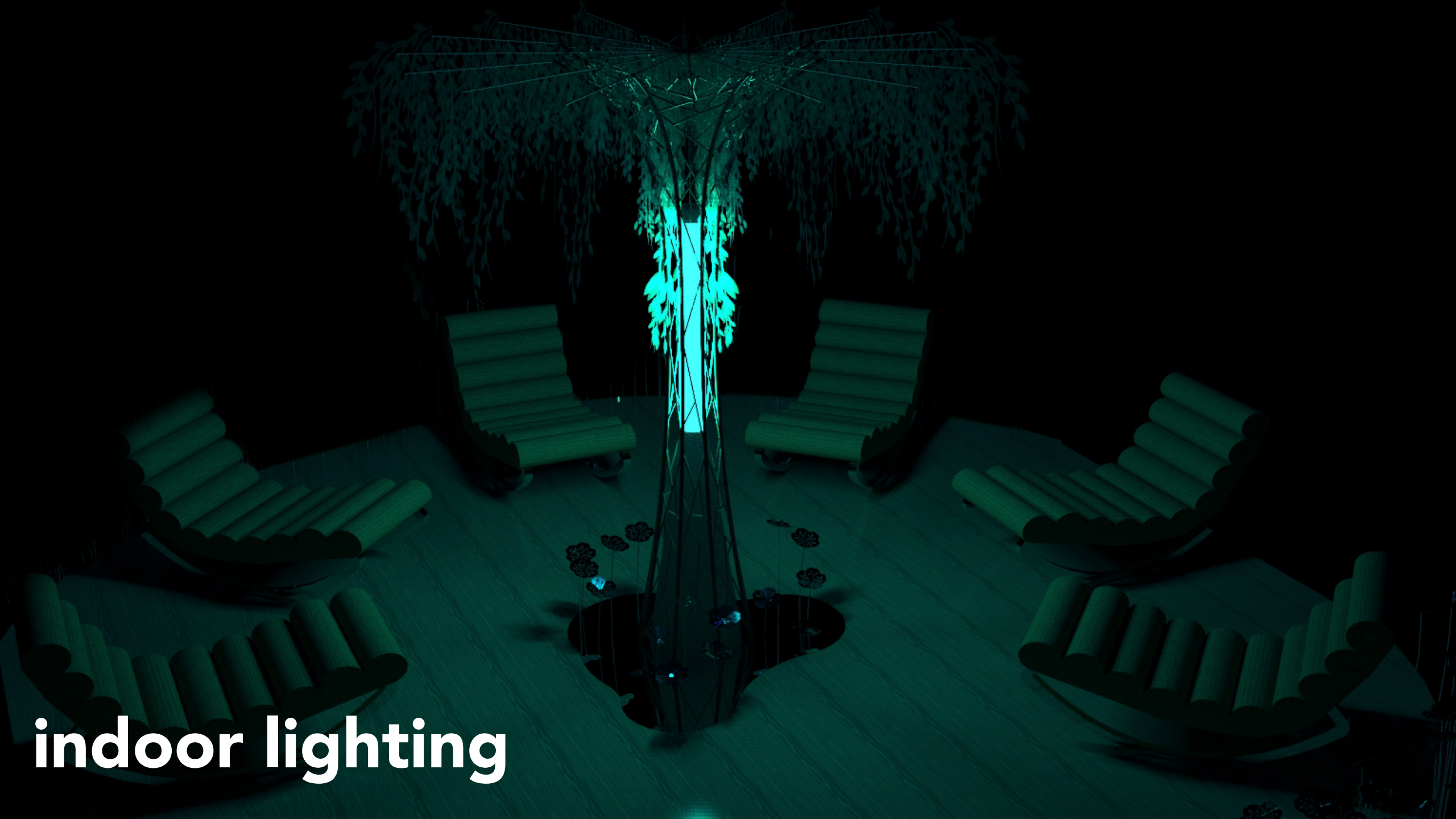
by answering **different needs**  
for lighting





**ephemeral lighting**





**indoor lighting**

# a **light** providing **psycho-emotional** benefits



concentration  
creativity  
productivity



muscular aches  
nervous tension



cognitive functions  
psychomotor balance  
internal temperature





**on-demand lighting**



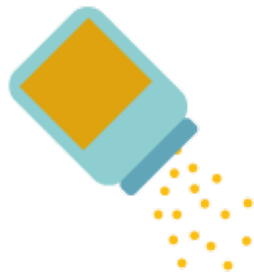
**replace a petrochemical  
industry**



# a biosourced and biodegradable light



water



**glowee**  
nutrients



**glowee**  
microbes



unlimited  
light



100% organic  
waste





**democratize** the use of  
bioluminescence to create a  
**self-evident** solution

The image shows two petri dishes containing agar, which is glowing with a bright blue fluorescence under ultraviolet light. The dishes are set against a dark background. The text 'welcome in bioeconomy' is overlaid in white, bold, sans-serif font across the center of the dishes. The left dish shows some faint, dark spots on the agar surface, while the right dish appears more uniform. The overall scene is a scientific or laboratory setting.

**welcome in  
bioeconomy**

*Glouee bio-éclaire*

*LES VILLES DE FRANCE*



LABIOTECH.eu  
The European Biotech News Website

Le Monde



Forbes



Les Echos



madame FIGARO



INNOVATORS UNDER 35



Forbes 30 UNDER 30



InnoEnergy Knowledge Innovation Community



# Metropolis: by **LIGHT**

## Key takeaways

- *all the answers can be found in Nature*
- *being responsible means taking into account the whole value chains*
- *bioluminescence can both improve environmental impact and well-being*





**let's get on board  
together!**

**Sandra Rey**

Founder and CEO of Glowee  
[sandra@glowee.fr](mailto:sandra@glowee.fr)



# Metropolis: *by* **LIGHT**

Thanks from  
*Sandra Rey*

